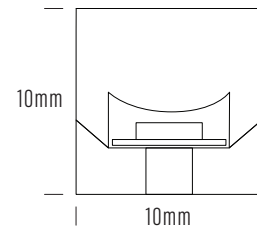
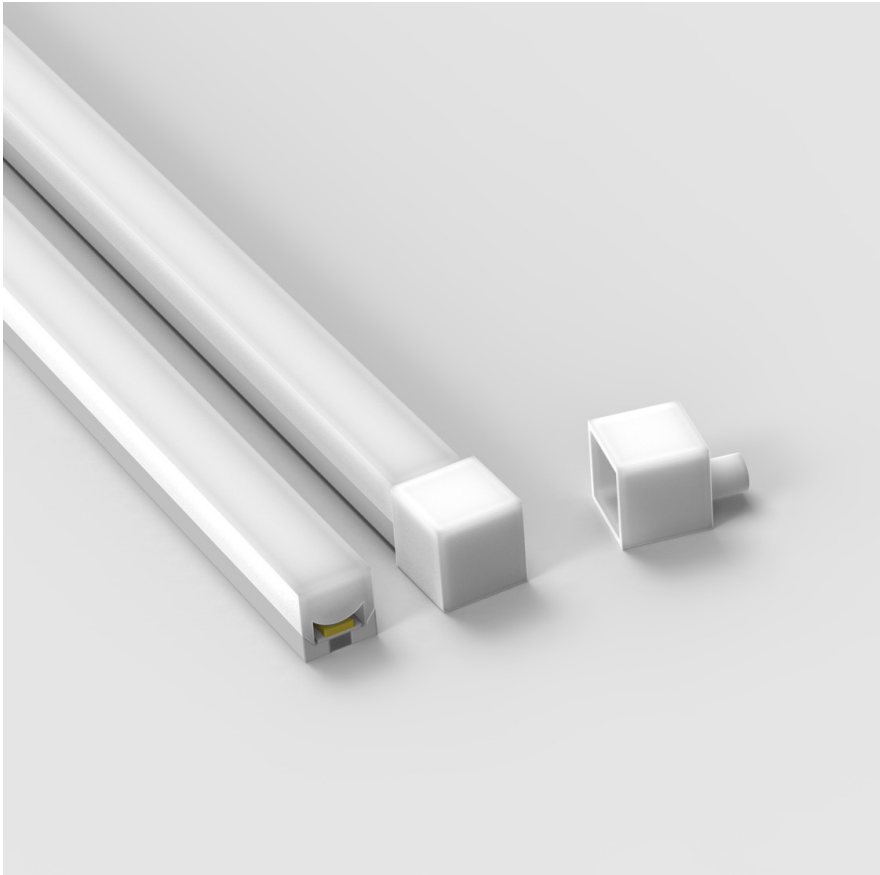


AQS-401 / Mono

The AQS-401 Neon Flex product is manufactured in a continuous extrusion process and then manually terminated to length with IP65 overmolded cable entry points here in our Sydney factory for a quicker turn-around time.

AQS-401-MONO

Neon Flex



Product	AQS-401-Mono
Voltage	24V DC
Watts (per Meter)	5W / 10W
IP Rating	IP65
Lumen Output (per Meter)	371lm - 828lm
CCT & Colour Options	2700K / 3000K / 4000K / 5000K / (2700K stocked)
Working Mode	Constant Voltage (PWM) / DMX
Max Length (Single Power Feed)	8m
Max Length (Double Power Feed)	16m
Cut Interval	36mm
Bend Direction	Vertically
Minimum Bend Diameter	100mm
LED Type	2835
LED Qty / M	168
Lumen Maintenance	70,000 Hours L70@ 25°C, 50,000 Hours L70@ 50°C
Materials	Silicon
Emission Angle	180°
Operating Temperature	-20° to +40°C
Installation Temperature	5° to +35°C
Warranty	3 Year Aqualux Warranty

Example Product Code Variation						
Produce Code	Size	CCT	Voltage	W / M	Lm/M	
AQS-401-27A05	1010	2700K	24V DC	5W	380lm	
AQS-401-27A10	1010	2700K	24V DC	10W	738lm	
AQS-401-30A05	1010	3000K	24V DC	5W	402lm	
AQS-401-30A10	1010	3000K	24V DC	10W	786lm	
AQS-401-40A10	1010	4000K	24V DC	10W	829lm	
AQS-401-50A10	1010	5000K	24V DC	10W	828lm	

For wiring diagrams please refer to the aqualux website: www.aqualux.com.au / Support / Downloads / Wiring Diagrams

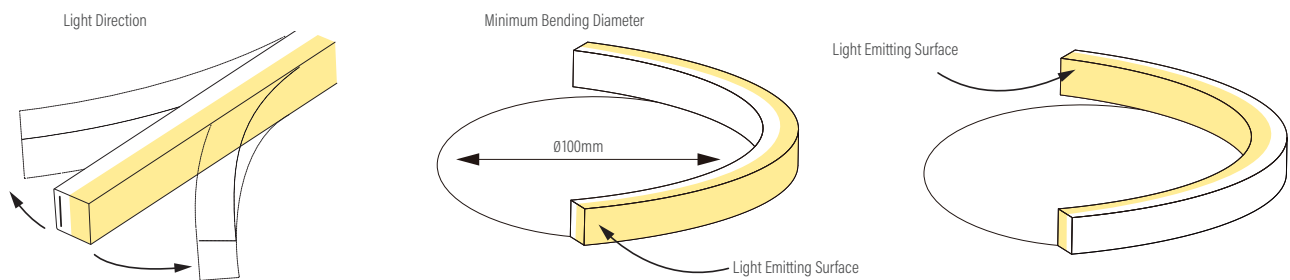
AQS-401-MONO

Neon Flex

Variations

Product Code	CCT Kelvin	Voltage Direct Current	Watts Meter	Lumens Meter	Max Run Single End	Max Run Double End
AQS-401-27A05	2700K	24V DC	5W	380lm	8m	16m
AQS-401-27A10	2700K	24V DC	10W	738lm	8m	16m
AQS-401-30A05	3000K	24V DC	5W	402lm	8m	16m
AQS-401-30A10	3000K	24V DC	10W	786lm	8m	16m
AQS-401-40A10	4000K	24V DC	10W	829lm	8m	16m
AQS-401-50A10	5000K	24V DC	10W	828lm	8m	16m

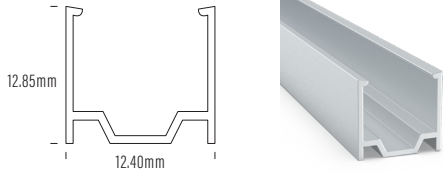
Bending Directions



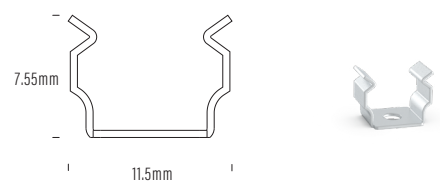
Neon Flex

Mounting

AQS-401-ACC-02
2m Aluminium

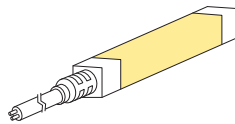


AQS-401-ACC-03
Aluminium Clip

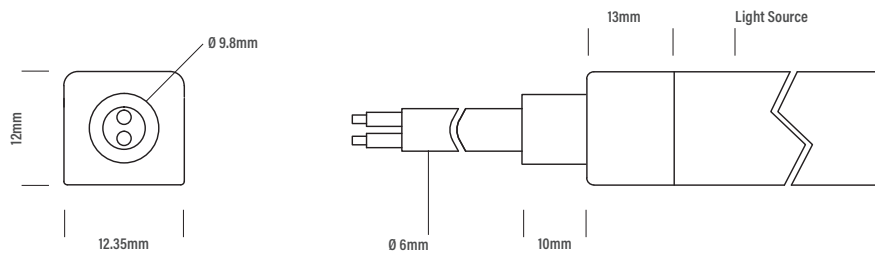


Direct Cable Entry

D01

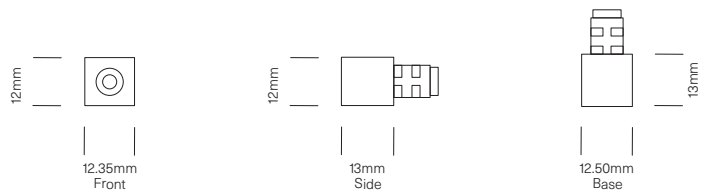


Direct Cable Entry



Silicone End Caps

The use of glues and resins as fixing agents should be avoided. If the use of a glue or adhesive compound cannot be avoided, a neutral pH silicone-based compound is suggested.
High VOC, Epoxy-based resins, cyanoacrylate or other adhesives will void the warranty.



Neon Flex

AQS Family Reference Table

Product	Type	IP Rating	LED Options	Size mm	Power/m	Application
AQS-170	Cob Strip	IP20	Mono	10mm	10W DC	Internal / Profile required
AQS-172	Cob Strip	IP20	Mono	4mm	5W DC	Internal / Profile required
AQS-180	HE Strip	IP20	Mono	10mm	20W DC	Internal / Profile required
AQS-400	Neon Flex	IP65	Mono	10 x 9	5W DC / 10W DC	External / No profile required
AQS-401	Neon Flex	IP65	Mono	10 x 10	10W DC	External / No profile required
AQS-402	Neon Flex	IP67	Mono	6 x 12	10W DC	External / No profile required
AQS-410	Neon Flex	IP65	RGB	13 x 12	10W DC	External / No profile required
AQS-420	Neon Flex	IP65	Mono / RGBW	12 x 20	10W / 15W	External / No profile required
AQS-500	Neon Flex	IP68	Mono / RGB / RGBW / DMX	11.5 x 21	5W / 8W / 12W / 18W	External / Submerged / No profile
AQS-505	Neon Flex	IP68	Mono	13.5 x 13.5	10W	External / Submerged / No profile
AQS-510	Neon Flex	IP68	Mono / RGB / RGBW / DMX	16.5 x 16.5	10W / 13W / 17W / 18W	External / Submerged / No profile

Extension Wire Recommendations

Maximum extension wire length according to light power

Watts	22AWG 0.34mm ²	20AWG 0.53mm ²	18AWG 0.82mm ²	17AWG 1.04mm ²	16AWG 1.38mm ²	14AWG 2.07mm ²	12AWG 3.29mm ²	10AWG 5.62mm ²
10W	36m	60m	100m	120m	140m	240m	400m	600m
20W	18m	30m	50m	60m	70m	120m	200m	300m
30W	12m	20m	30m	38m	45m	80m	130m	200m
40W	8m	15m	22m	28m	35m	60m	95m	140m
50W	6m	12m	18m	22m	28m	48m	75m	105m
60W	5m	10m	15m	18m	22m	36m	60m	88m
70W	-	8m	12m	14m	18m	30m	50m	72m
80W	-	6m	10m	11m	14m	24m	40m	58m
90W	-	4m	7m	8m	10m	18m	30m	45m
100W	-	-	5m	6m	7m	12m	22m	32m
110W	-	-	3m	4m	5m	8m	15m	22m
120W	-	-	2m	2.5m	3m	0m	8m	12m